

The background of the slide is a photograph of renewable energy infrastructure. On the left, there are several wind turbines. In the foreground, there are rows of solar panels. On the right, a large metal transmission tower stands against a sky with soft, orange and blue clouds, suggesting a sunset or sunrise. A decorative wavy border in green and orange runs across the middle of the image.

PTC INDIA LIMITED

Investor Presentation

TABLE OF CONTENTS

03

Financial Overview (Consolidated)

05

Financial Overview (Standalone)

10

PTC Overview

15

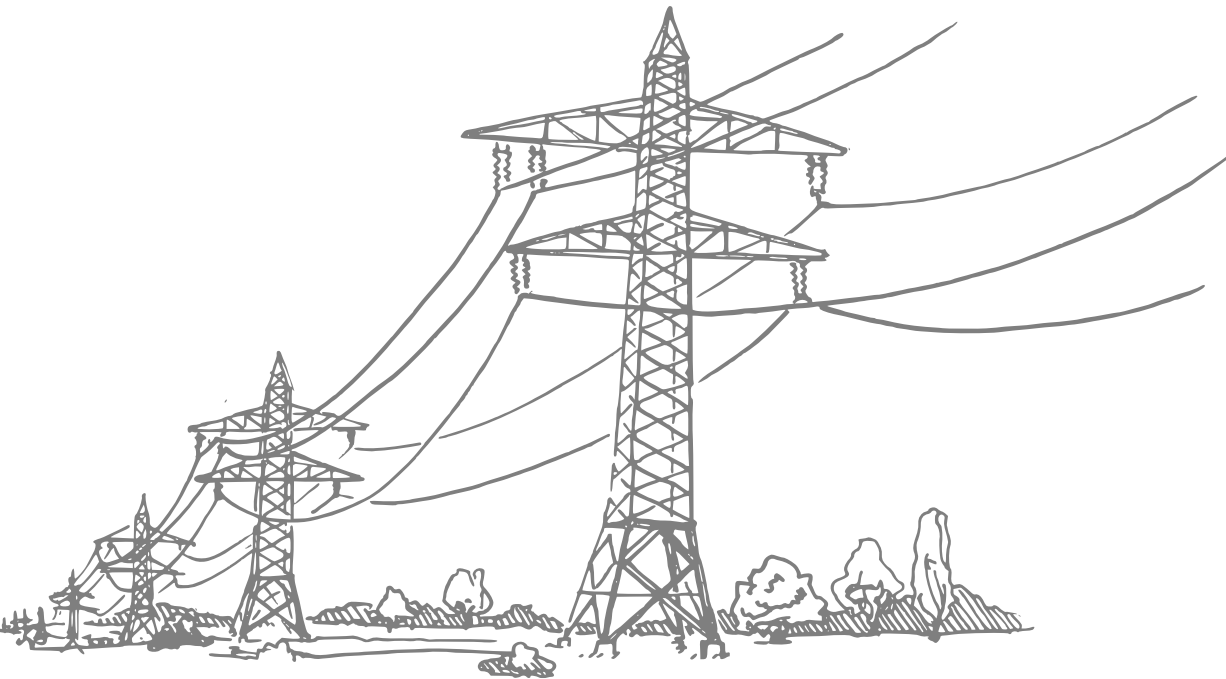
Business Summary

18

Performance Matrix (2024-25)

20

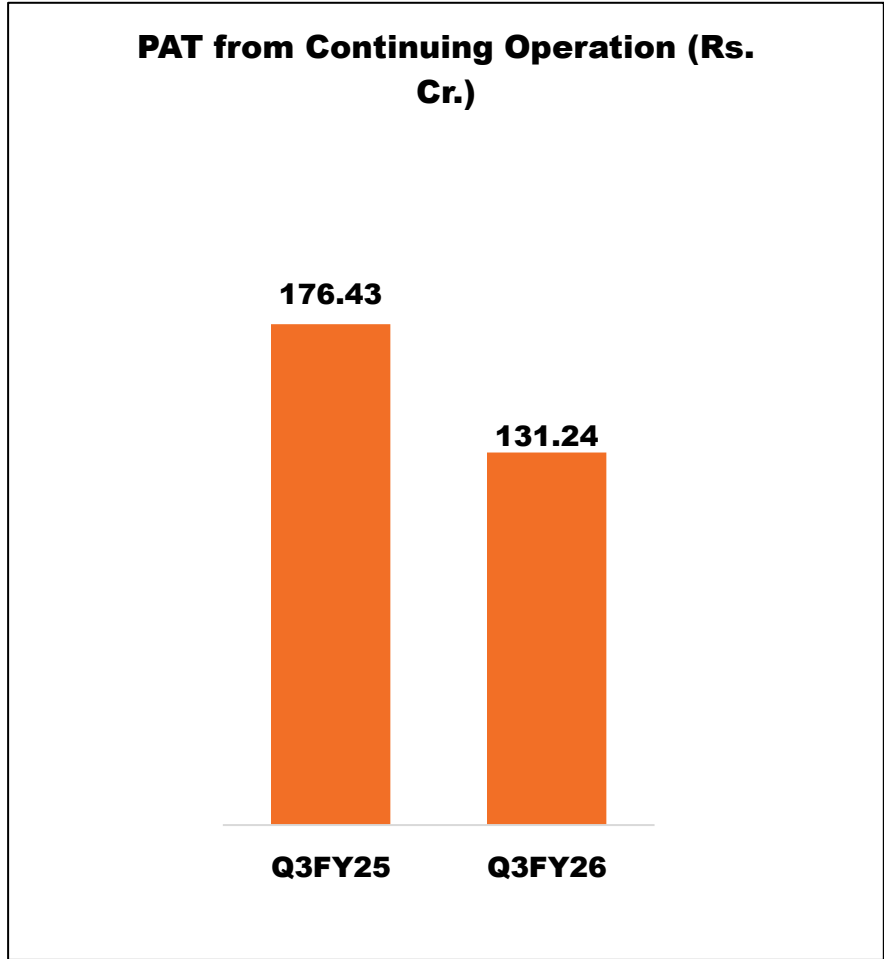
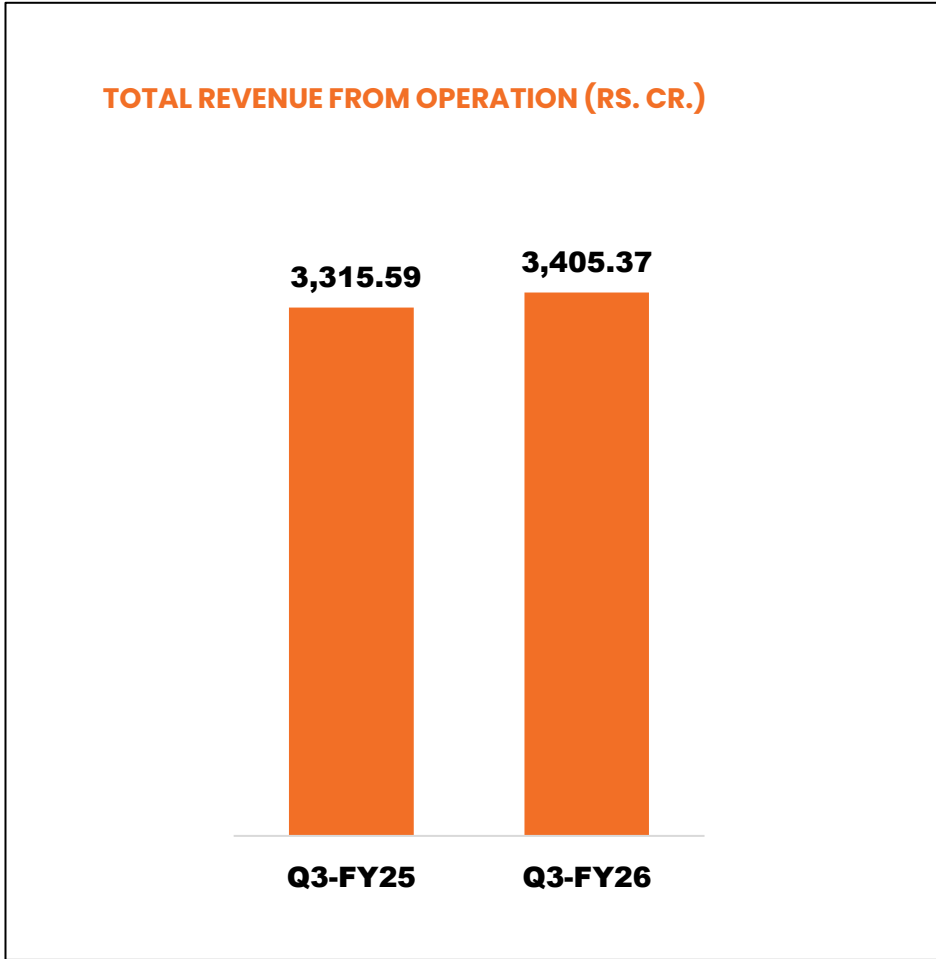
Trading Market in FY 2024-25





Financial Overview
Q3 FY2026 (CONSOLIDATED)

Q3FY26 vs Q3FY25 (consolidated)

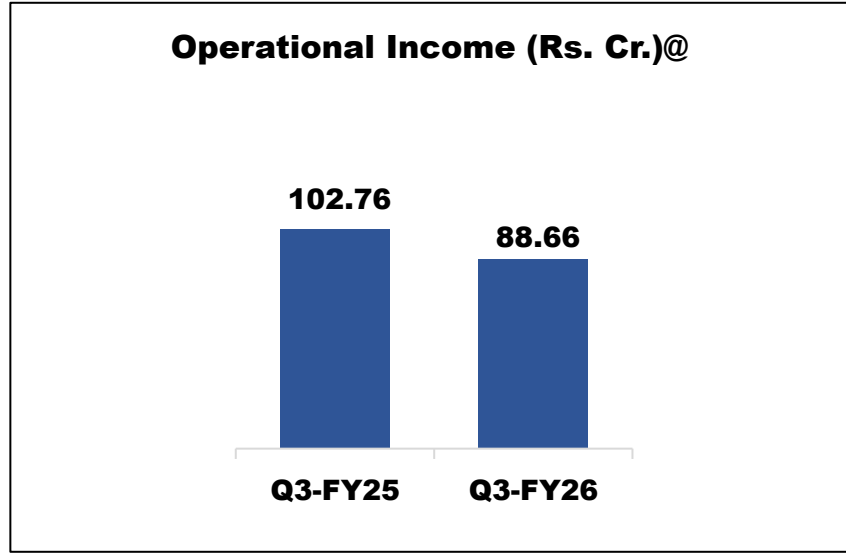
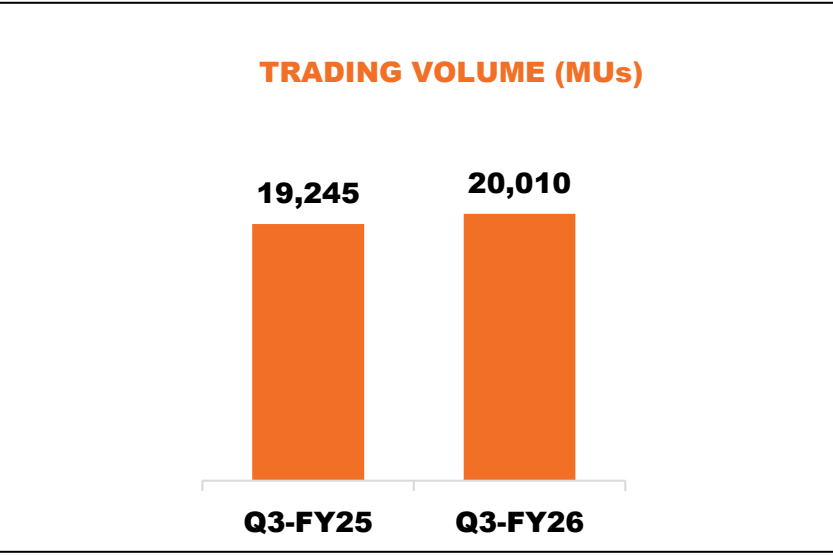




Financial Overview
Q3 FY2026 (Standalone)

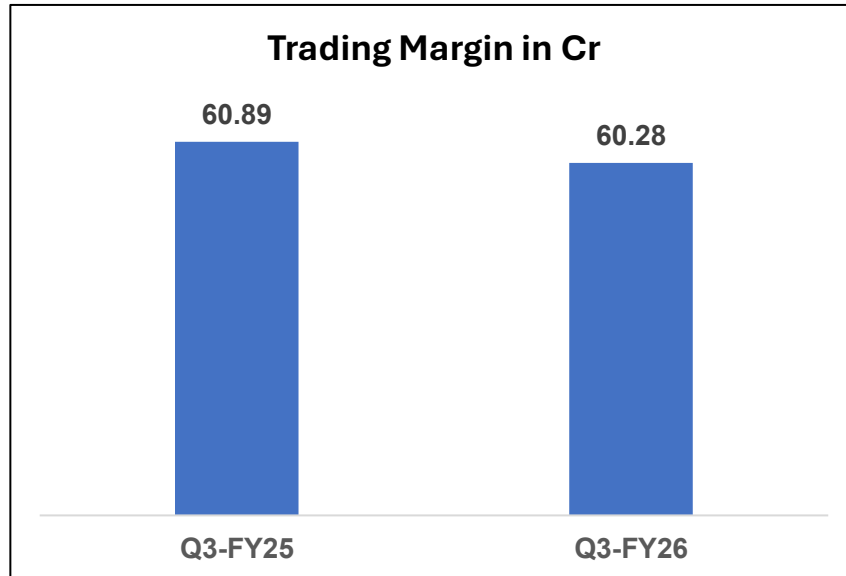
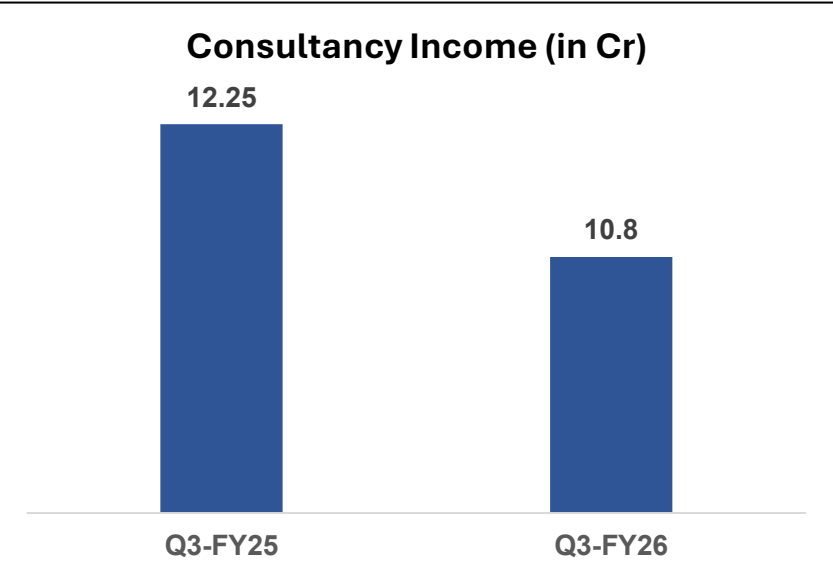
Q3-FY26 vs Q3-FY25

4%
↑



14%
↓

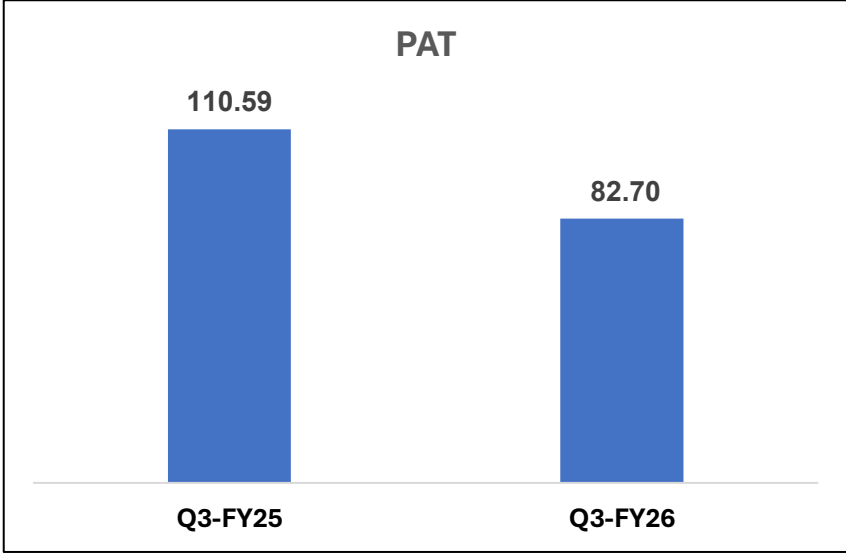
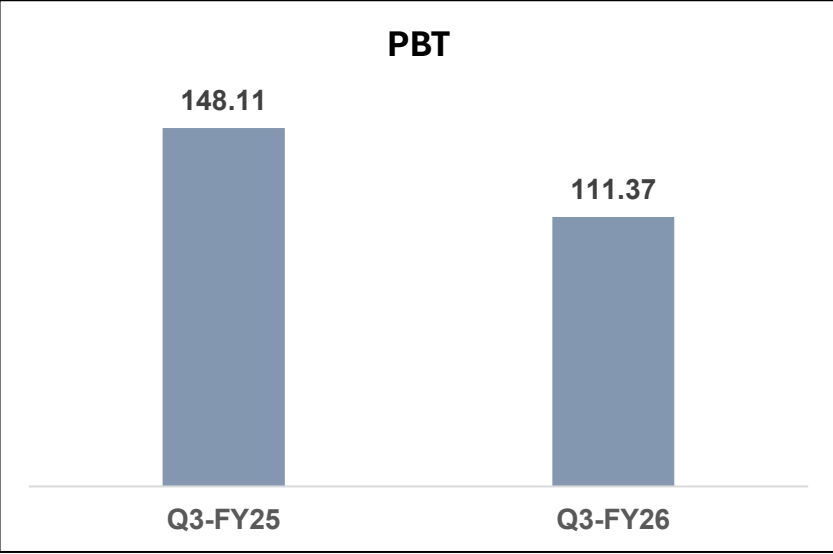
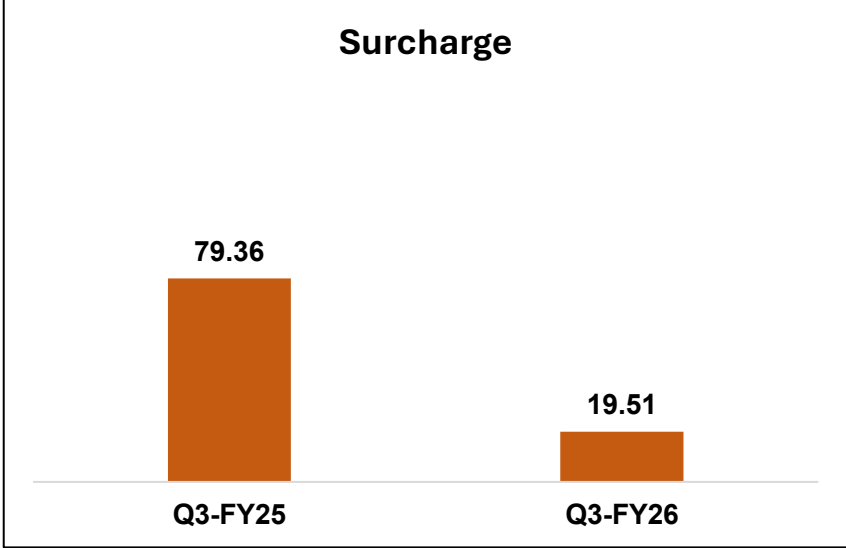
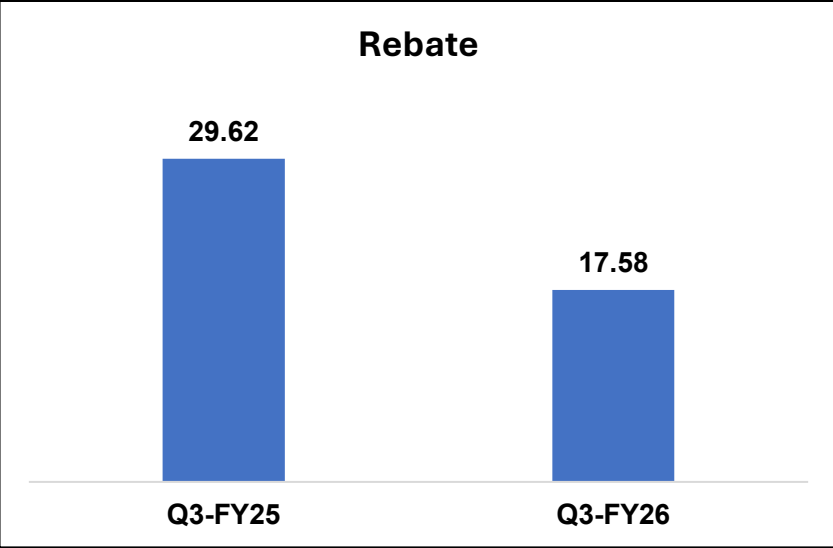
12%
↓



1%
↓

@: does not include surcharge income

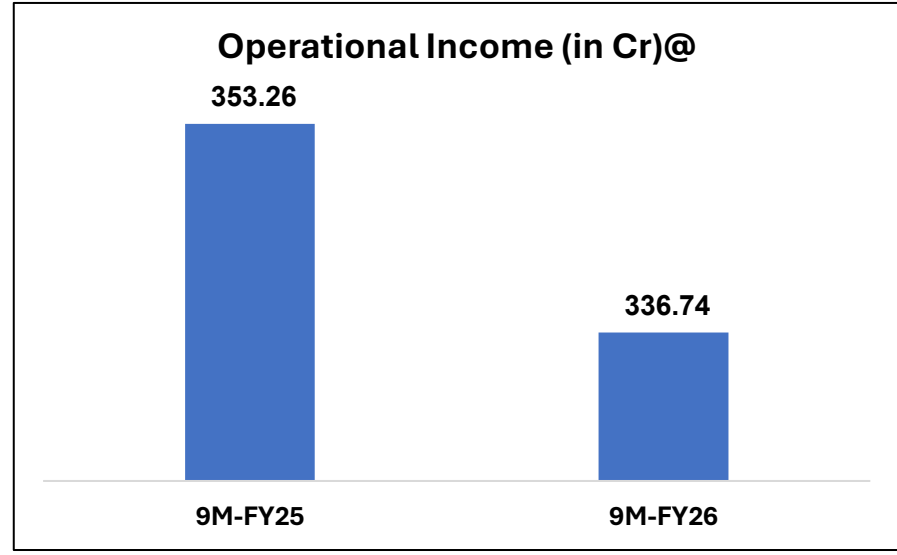
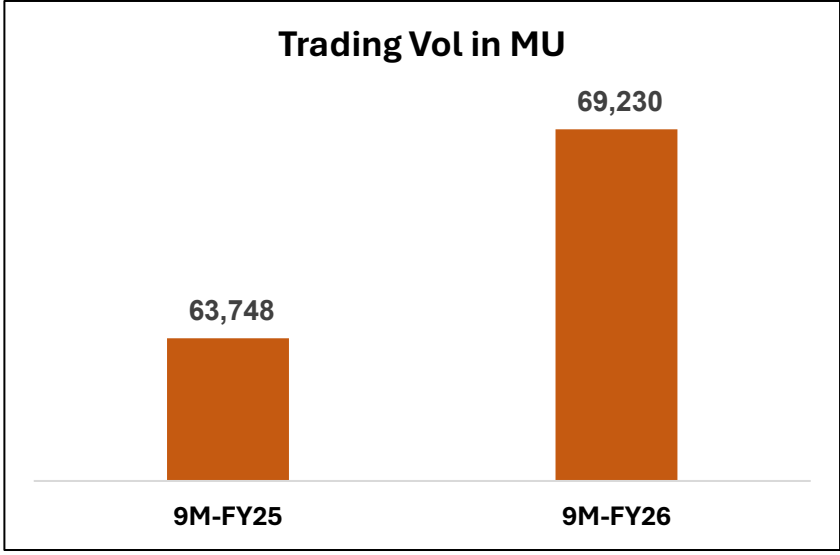
Q3-FY26 vs Q3-FY25



All amounts in INR Crores

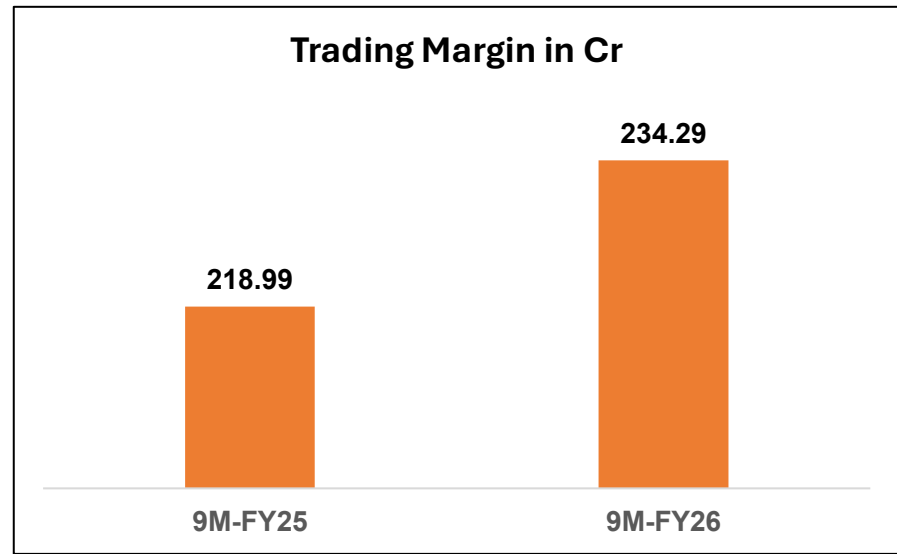
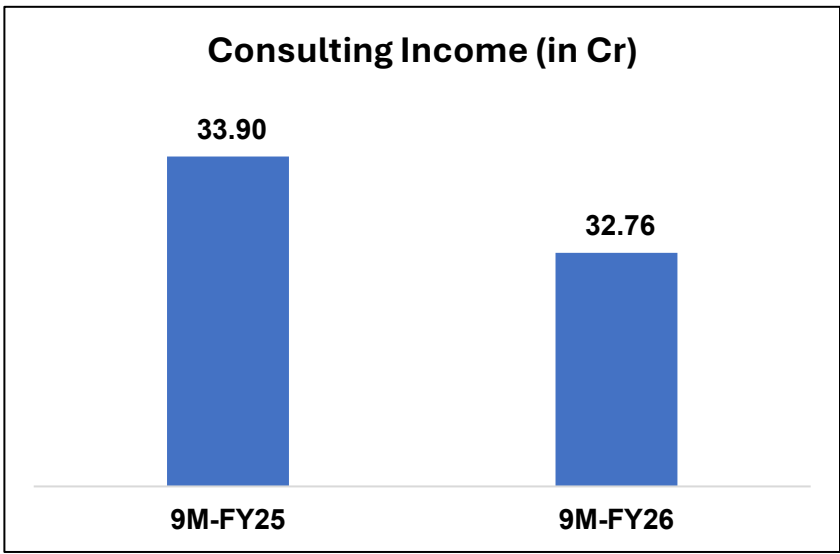
9M-FY26 vs 9M-FY25

9% ↑



5% ↓

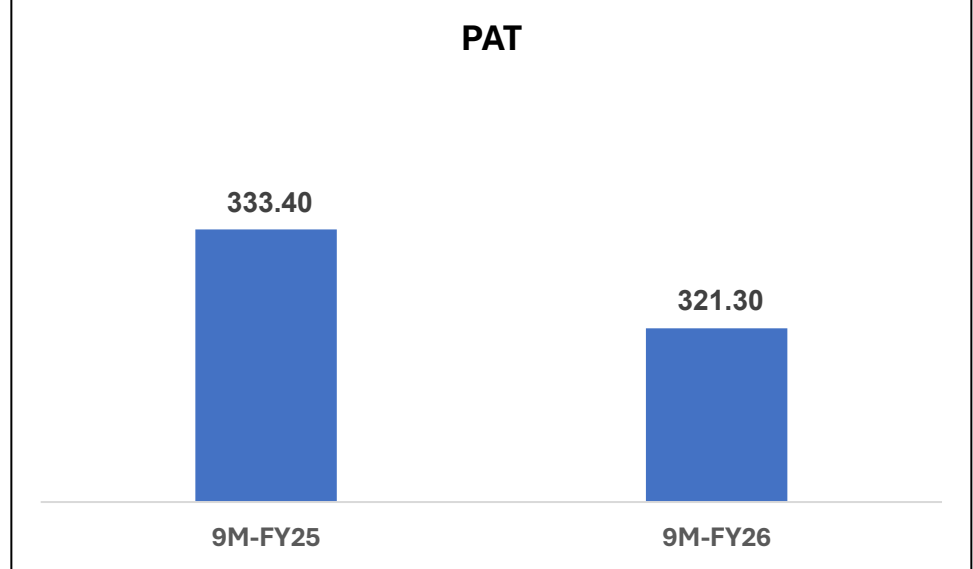
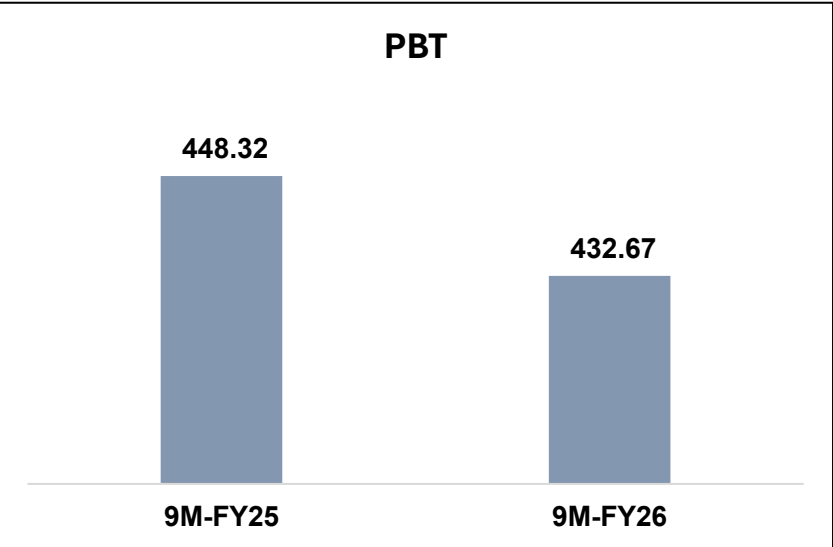
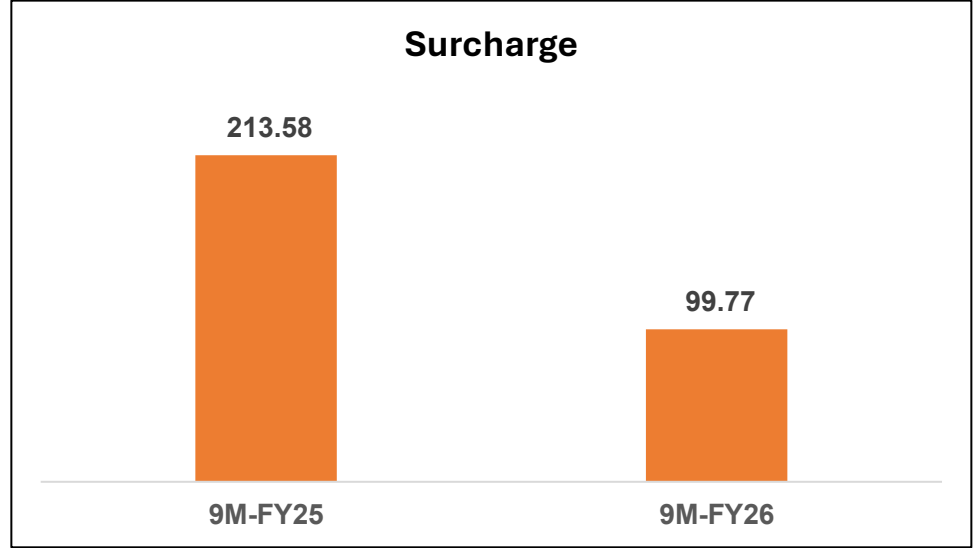
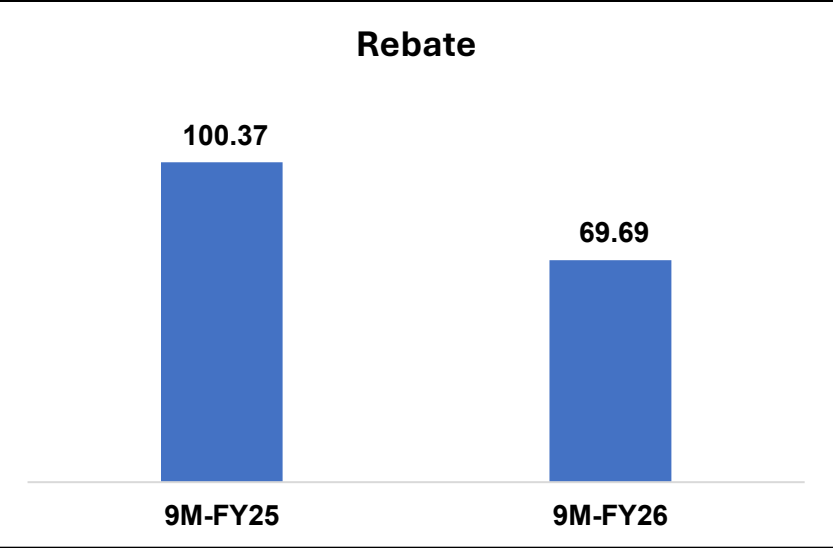
3% ↓



7% ↑

@: does not include surcharge income

9M-FY26 vs 9M-FY25



All amounts in INR Crores



VISION

To be a frontrunner in power trading by developing a vibrant power market and striving to correct market distortions



MISSION

- Promote Power Trading to optimally utilize the existing resources
- Develop power market for market -based investments into the Indian Power Sector
- Facilitate development of power projects particularly through private investment
- Promote exchange of power with neighboring countries



CORE VALUES

- Transparency
- The Customer is Always Right
- Encouraging Individual Initiative
- Continuous Learning
- Teamwork

1999

- Company got incorporated.
- Cross Border business

2004

- Listing on bourses in 2004
- Changed the logo for an inclusive business involving renewable

2006

- Creation of Subsidiaries – PFS & PEL in 2008
- Hydro power from Bhutan in 2003-04

2008

- 2 tranches of QIP in 2008/09 totaling to 1700 Crores

2011

- Listing of PFS

2012

- Tolling as business started
- Adding Bangladesh as Client
- Operationalization of ST renewable *: includes profit from sale of PEL transaction

2017

- Renewable Trading
- Medium Term Trading as a new business model

2025

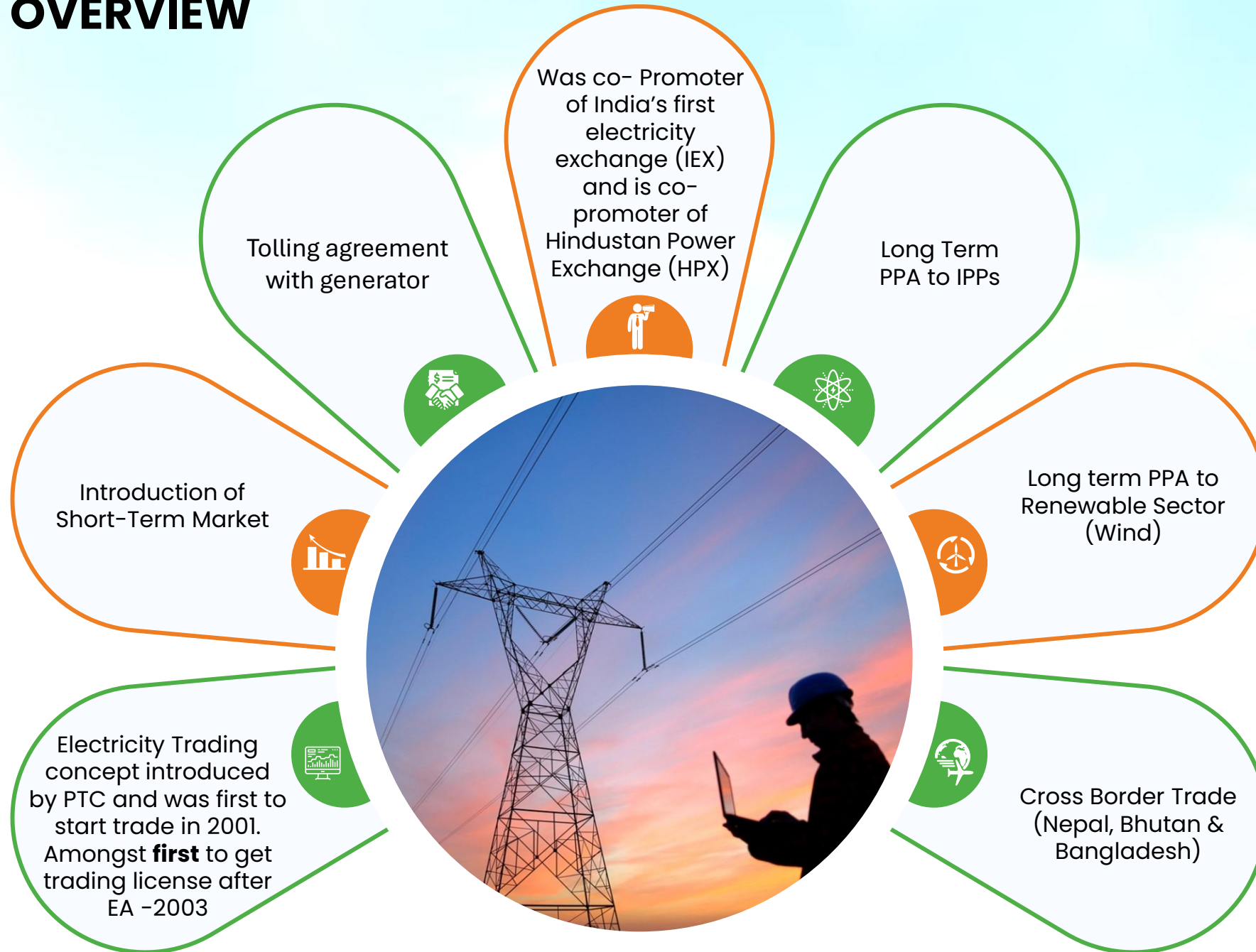
- 82.75 Billion Units of electricity trading
- PAT of ₹ 855 Crores
- Divestment of PEL



- 4 PSUs under Power Ministry hold 16.20% of the company
- Foreign Portfolio Investor hold 23.30%
- Insurance Companies hold 4.76%
- Mutual Funds hold 1.69%

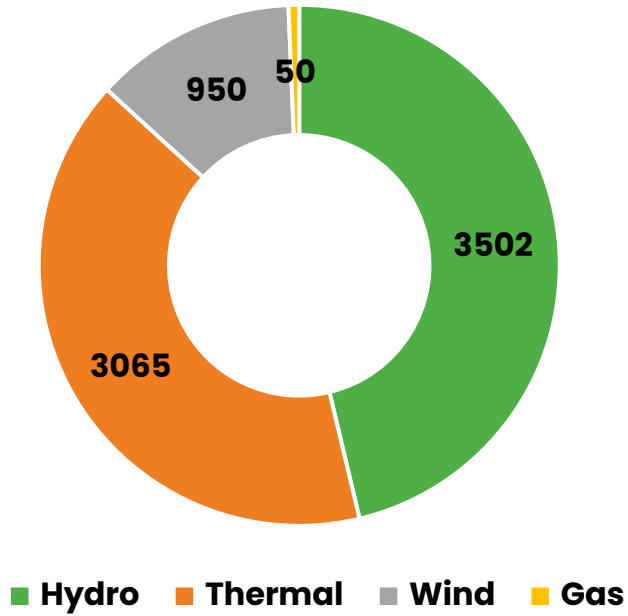
LIC of India is the single largest shareholder of the company

PTC OVERVIEW



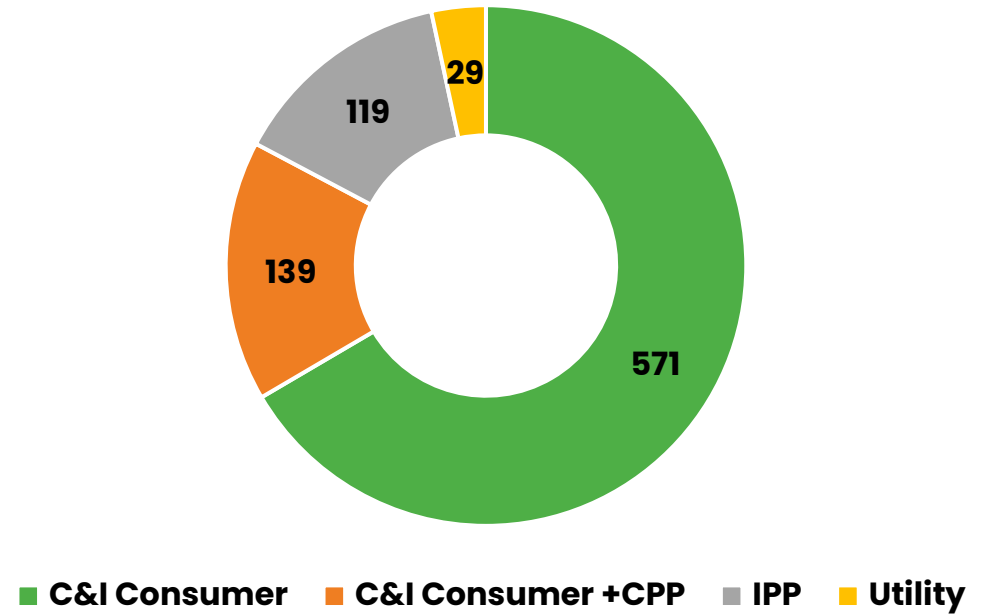
PTC OVERVIEW

LT & MT Portfolio in MW



- PTC has more than 7500 MW of operating LT & MT contract
- Hydro based projects consists of 46% of the total PPA.
- Renewable projects (including Hydro) 58% of the operating PPA portfolio of the company

Customer Profile

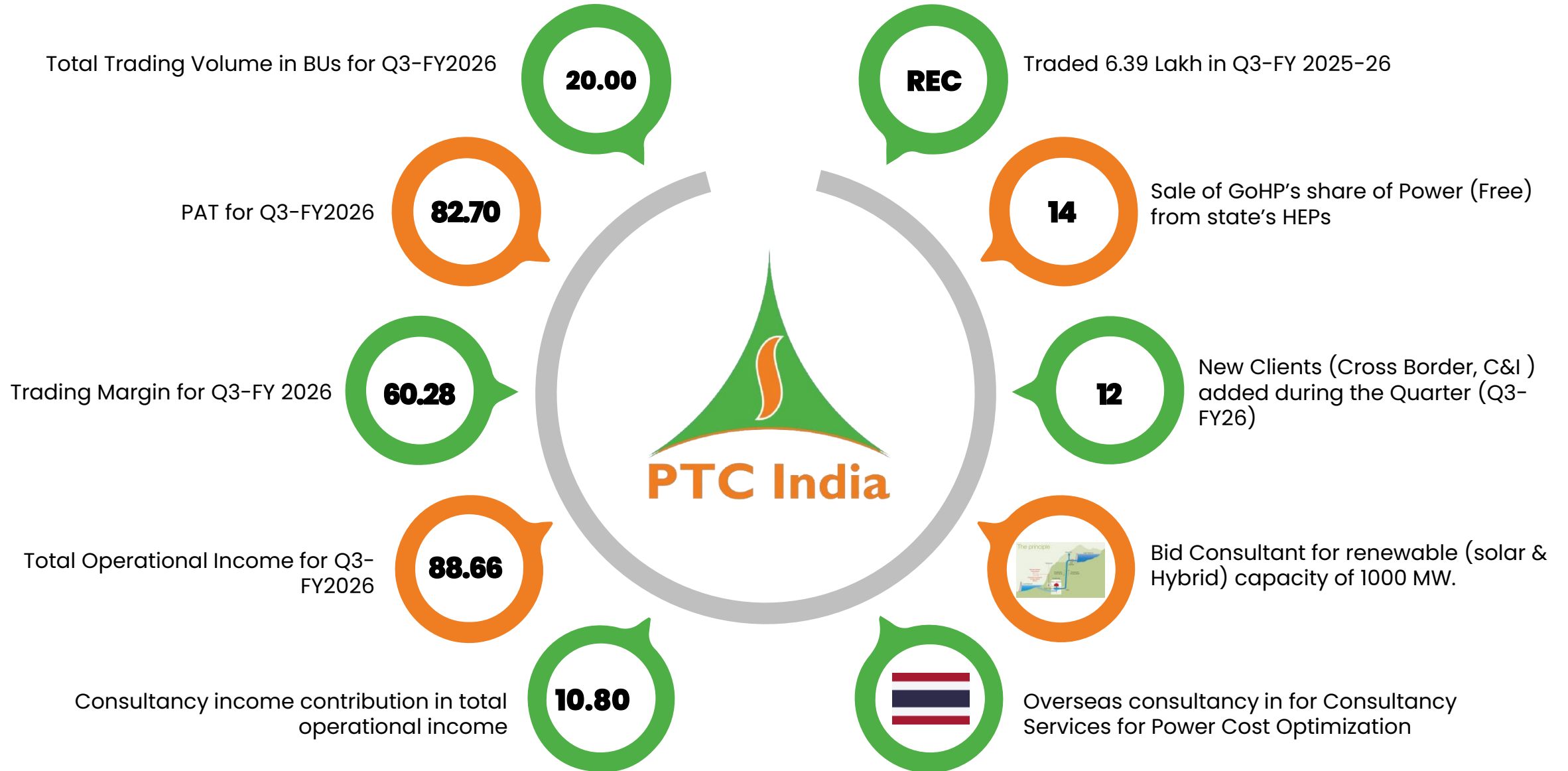


- Satisfactorily serving more than 800 clients across all segments
- Almost all utilities are our clients in short term (bilateral and / or exchange traded products).
- With transition towards carbon neutrality, demand for Renewable energy & different structure, C&I consumer and CPP model is new growth driver.



Business Summary
Q3 FY2026

BUSINESS SUMMARY



BUSINESS SUMMARY



Power purchase Agreement of 100 MW solar power on **long-term** for 25 years

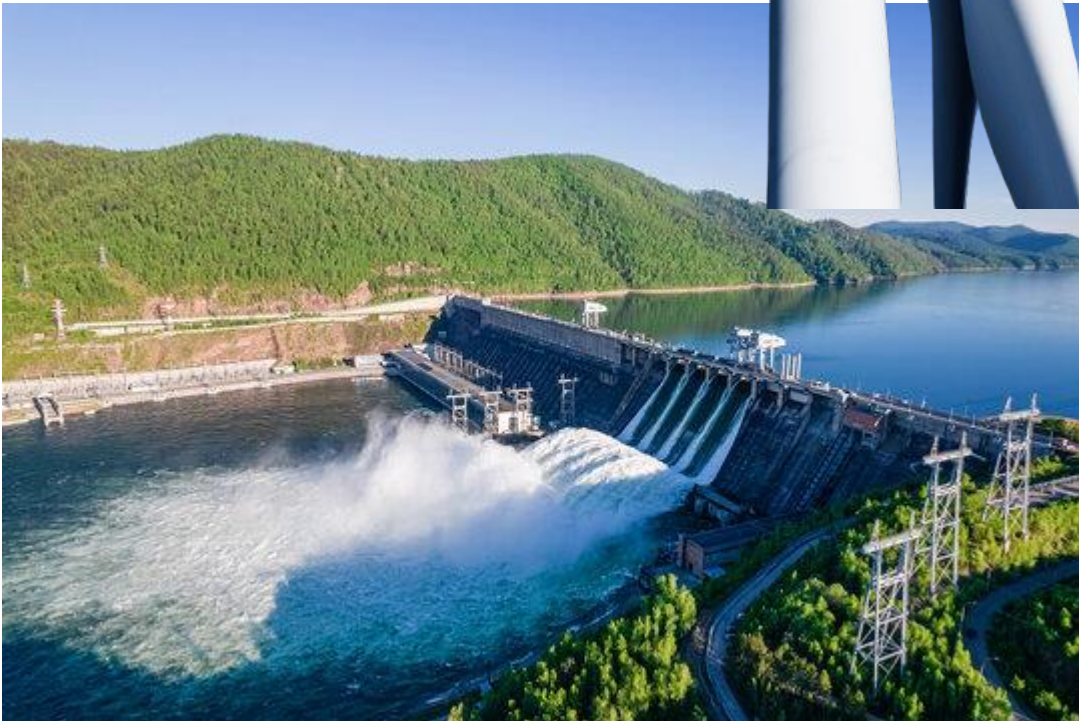
MoU with Indian Port Association (IPA) towards their green energy transition.

MoU NLC India Ltd towards their green energy transition

Expression of Interest for procurement of power 500 MW solar power with 250 MW/1000 MWh ESS on long term basis.

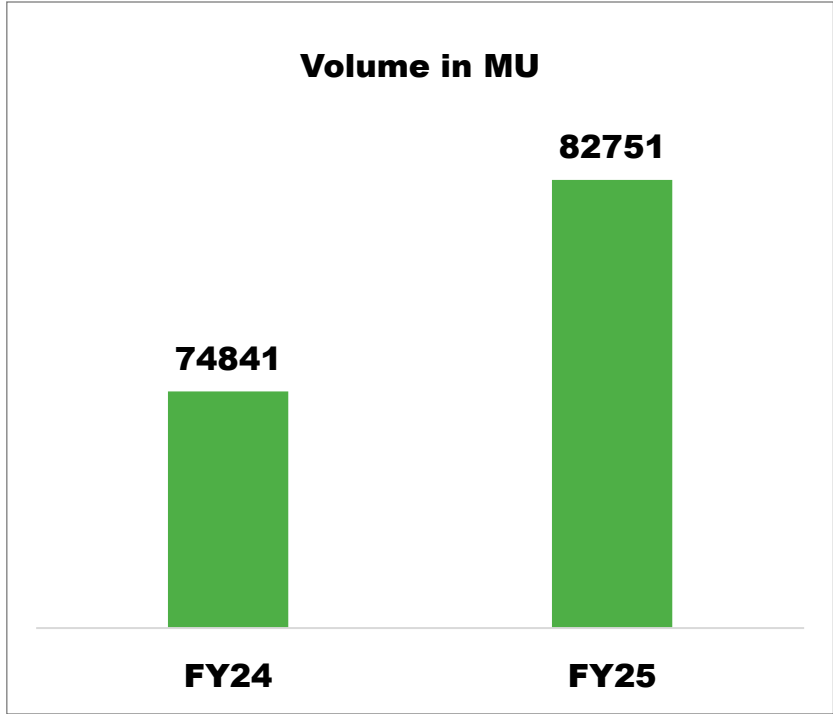
Trading & Consulting Business Initiative

Cross Border supply (export) of power of up to 1600 MW in winter for the short term.

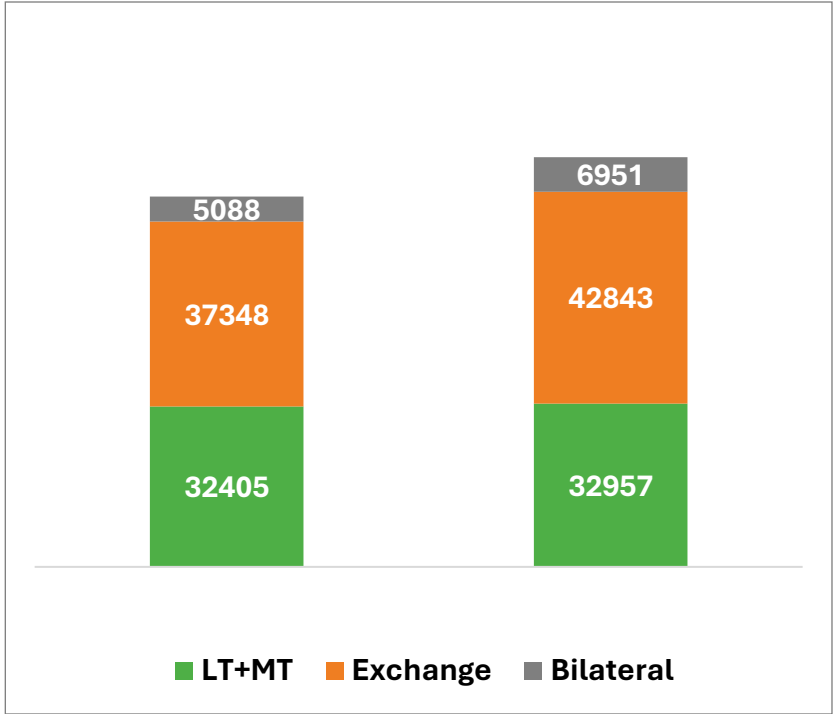




Performance Metrics **FY2024-25**



11% growth in FY 24-25 over FY 23-24



- MT & LT includes cross border volume
- Bilateral is short term business without exchange platform



INDIAN POWER TRADING MARKET: AT A GLANCE

1

Operates through power exchanges (IEX, PXIL, HPX) enabling real-time, day-ahead, and term-ahead trading. Regulated by CERC.

2

Around 270 Billion Units of Electricity traded in 2024-25

3

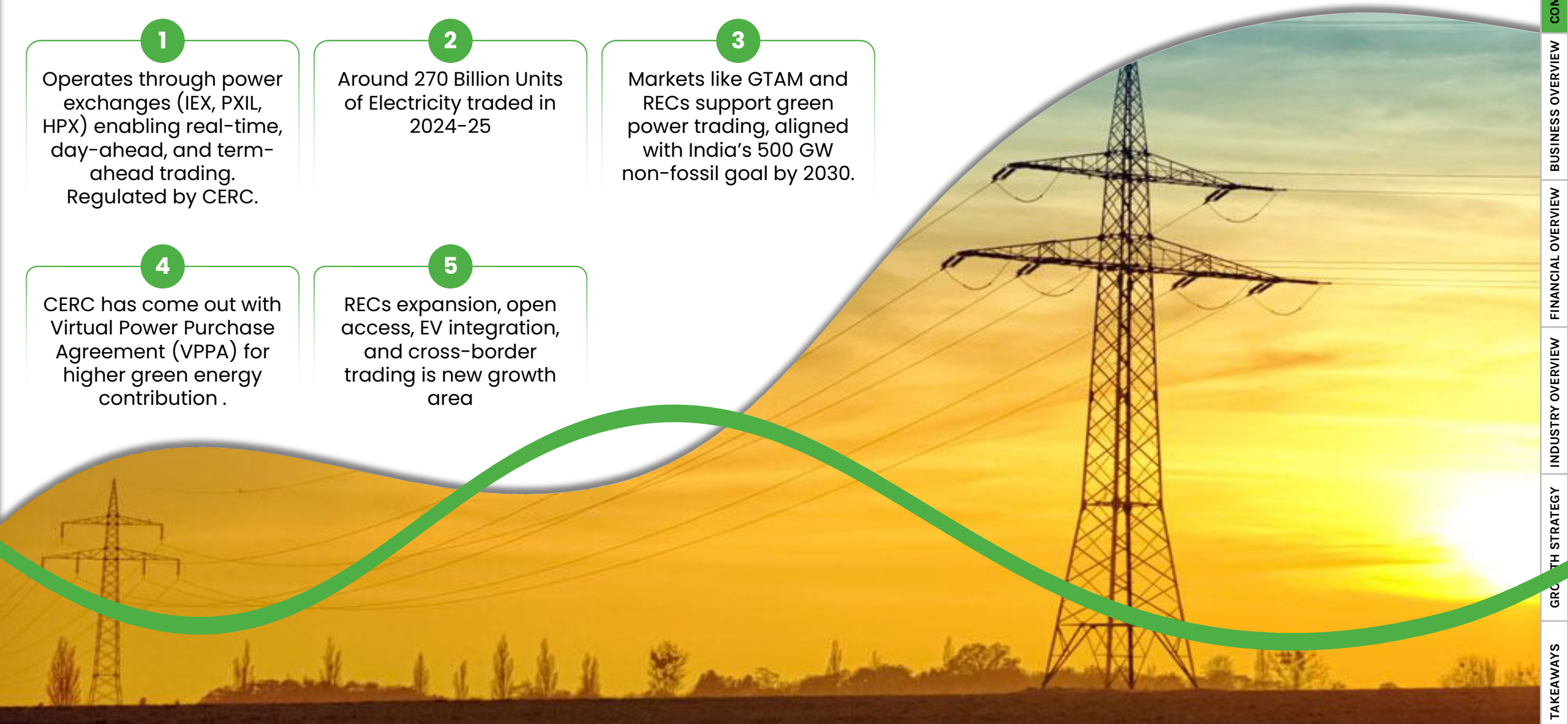
Markets like GTAM and RECs support green power trading, aligned with India's 500 GW non-fossil goal by 2030.

4

CERC has come out with Virtual Power Purchase Agreement (VPPA) for higher green energy contribution .

5

RECs expansion, open access, EV integration, and cross-border trading is new growth area



Thank You



PTC India Limited
2nd Floor, NBCC Tower,
15 Bhikaji Cama Place, New Delhi –
110066

Anand Kumar
Email: anandkumar@ptcindia.com
Tel. No. – +91-11-41659500, 41595100, 46484200
Fax No. – 91-11-41659144, 41659145