



PTC INDIA LIMITED

INVESTOR PRESENTATION
FY22 – Consolidated





01

Company Overview



02

Capability Profile



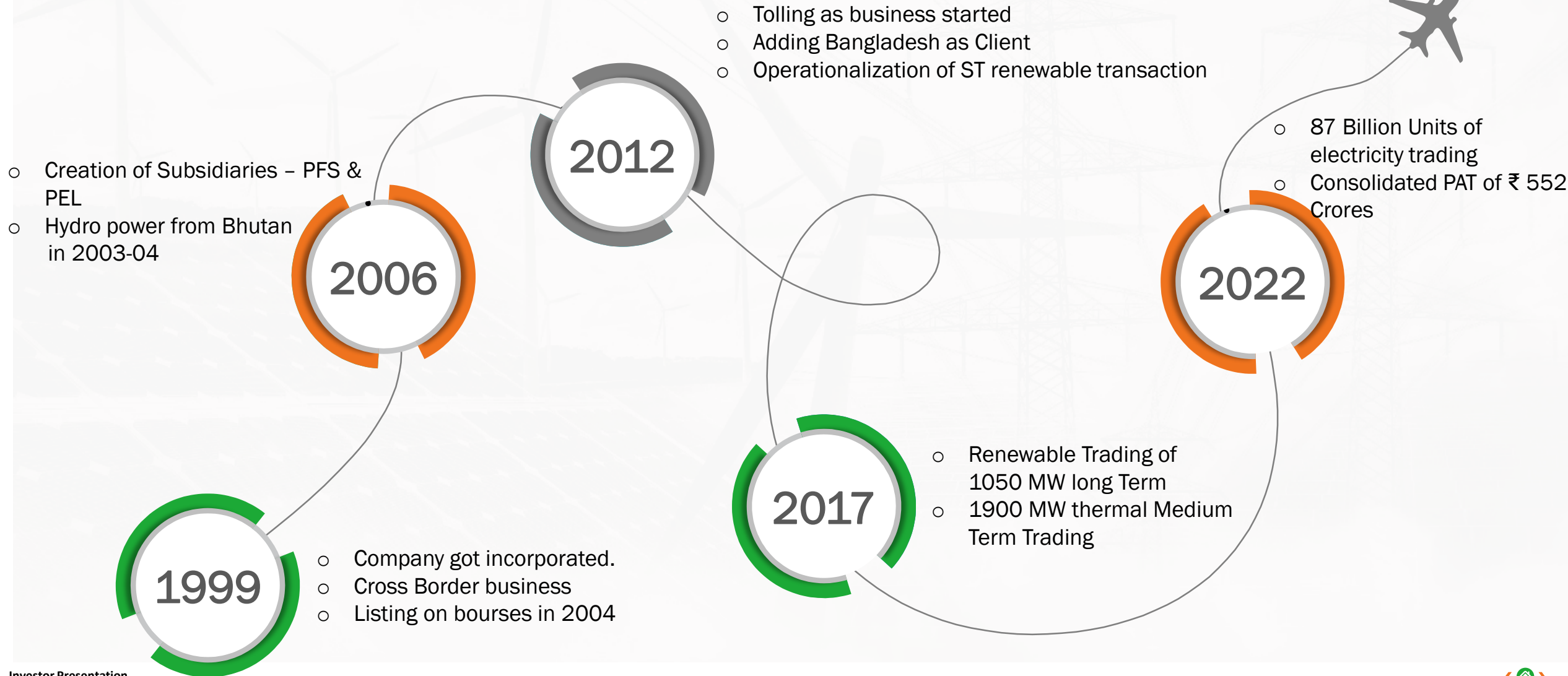
03

Financial Overview

CONTENTS

COMPANY OVERVIEW





PTC – “First” in Trading Market



Electricity Trading concept introduced by PTC and was first to start trade in 2002.
Amongst **first** to get trading license after EA -2003



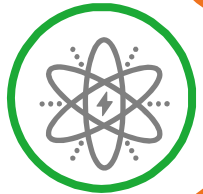
Introduction of Short Term Market



Tolling agreement with generator



Co- Promoter of India's first electricity exchange (IEX) & now Hindustan Power Exchange (HPX)



Long Term PPA to IPPs – [leading to ~40% of generation capacity owned by Private Sector]



Long term PPA to Renewable Sector (Wind)



Cross Border Trade (Nepal, Bhutan & Bangladesh)

Bellwether in
Power
Market
Development



Vision

- ▶ To be a Frontrunner in developing a vibrant Power Market and striving to correct market distortions



Mission

- Promote Power Trading to optimally utilize the existing resources
- Develop Power Market for market based investments into the Indian Power Sector
- Facilitate exchange of power with neighboring countries



Core Values

- Transparency
- The Customer is always right
- Encouraging Individual initiative
- Continuous Learning
- Teamwork

An Integrated Energy Service Company

POWER TRADING

1

- Domestic OTC market;
- Short/Medium& Long-term trades (utilities)
- Retail (Open Access consumers)
- Cross Border trade

ADVISORY SERVICES

2

- Energy Portfolio Management
- Energy efficiency implementation
- Project Management Services

RENEWABLE ENERGY

3

- Trading of 1050 MW ISTS connected wind power projects
- 288.8 MW Wind Energy Projects under PTC Energy Limited
- RE Solutions for C&I Consumers

INVESTMENTS

4

- Early stage support as Equity Investor / co-developer
- PTC India Financial Services Ltd.
- PTC Energy Limited –Wind Power Projects

* - Investment related business primarily through subsidiaries



Energy Portfolio Management

Round the clock portfolio management services to Discoms, SEZs and C&I consumers for power procurement planning, optimization, forecasting, scheduling & capacity building



Project Management Services

PMS for Transmission and Distribution for Deemed Licensees, Ports and other C&I consumers.
Providing bouquet of Services including O&M, Feasibility, Cost Estimation, Survey, Engineering, Bid Process Management, supervision, etc.



Sustainability Solutions

Supporting clients in meeting their sustainability targets and reducing carbon footprints through turnkey solutions for Sourcing Renewable Energy, energy efficiency solutions including feeder audits, energy audits for C&I consumers



Exchange Platform

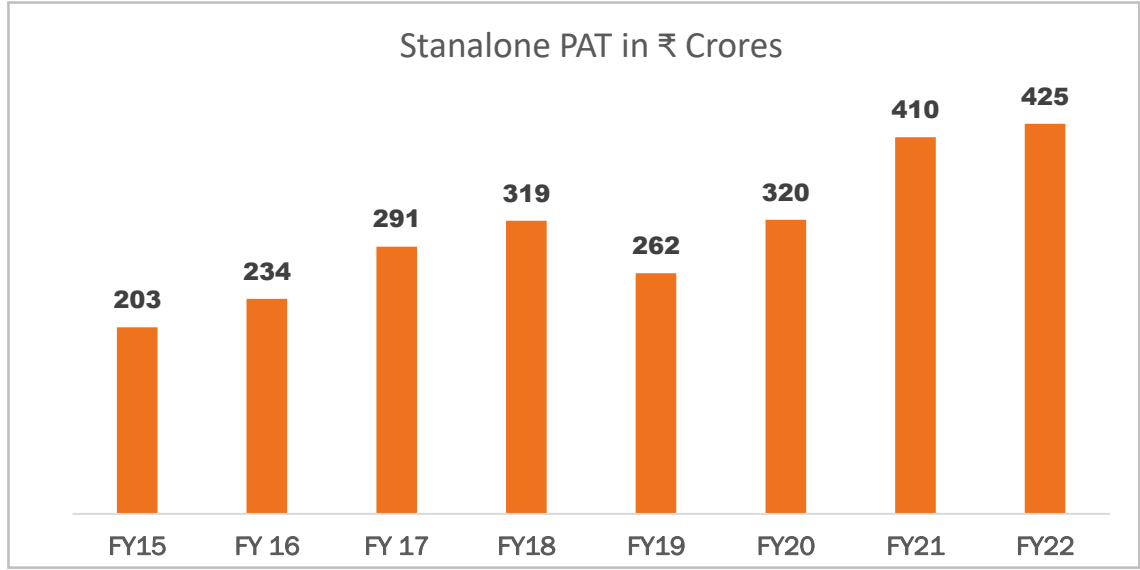
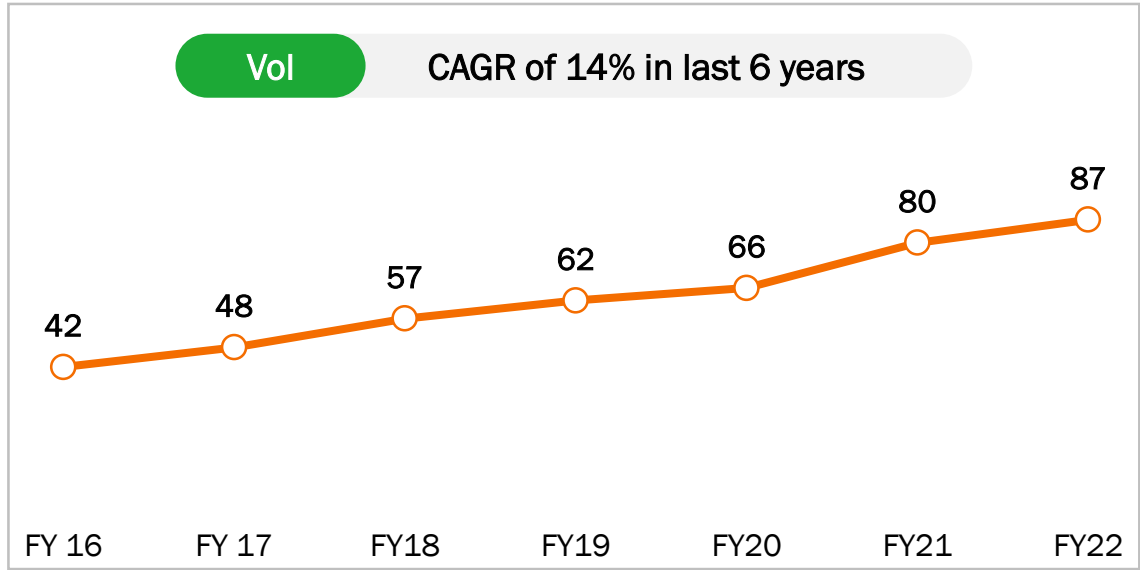
Received the approval for running and operating electronic exchange platform (Hindustan Power Exchange) in association with ICICI Bank and Bombay Stock Exchange

40%+ Dominant Market Leader with over 40% market share Total traded power: 87 BUs (FY-22)

28 Supplying power to 28 States/UTs

3 Cross Border Trading: Trading power with Nepal, Bhutan & Bangladesh, Total Traded power-7.4 BUs (FY-22)

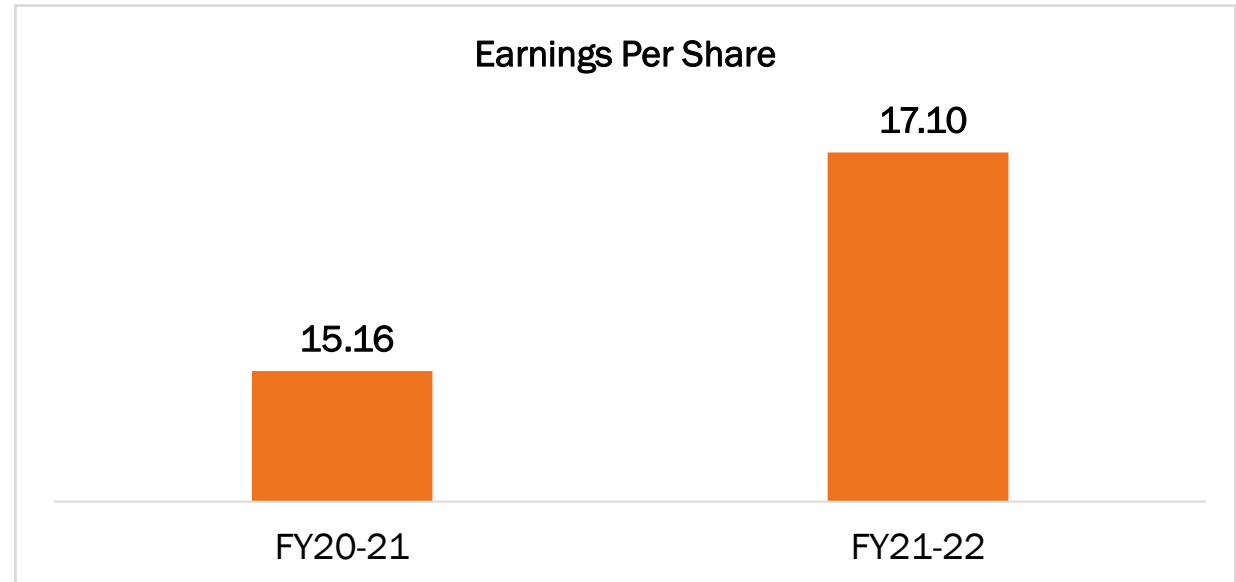
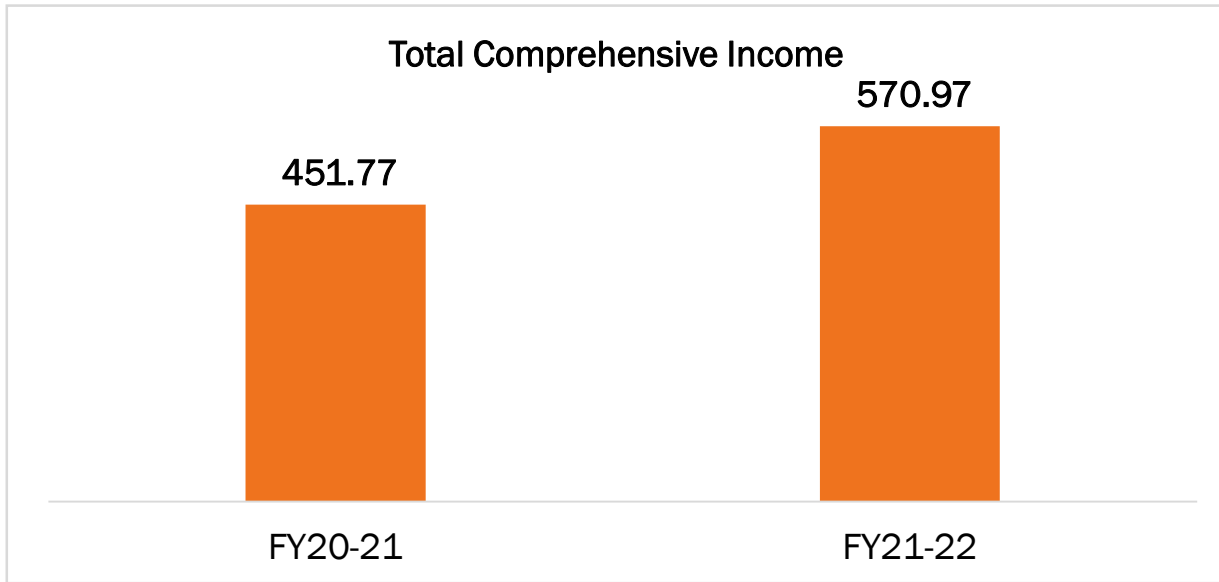
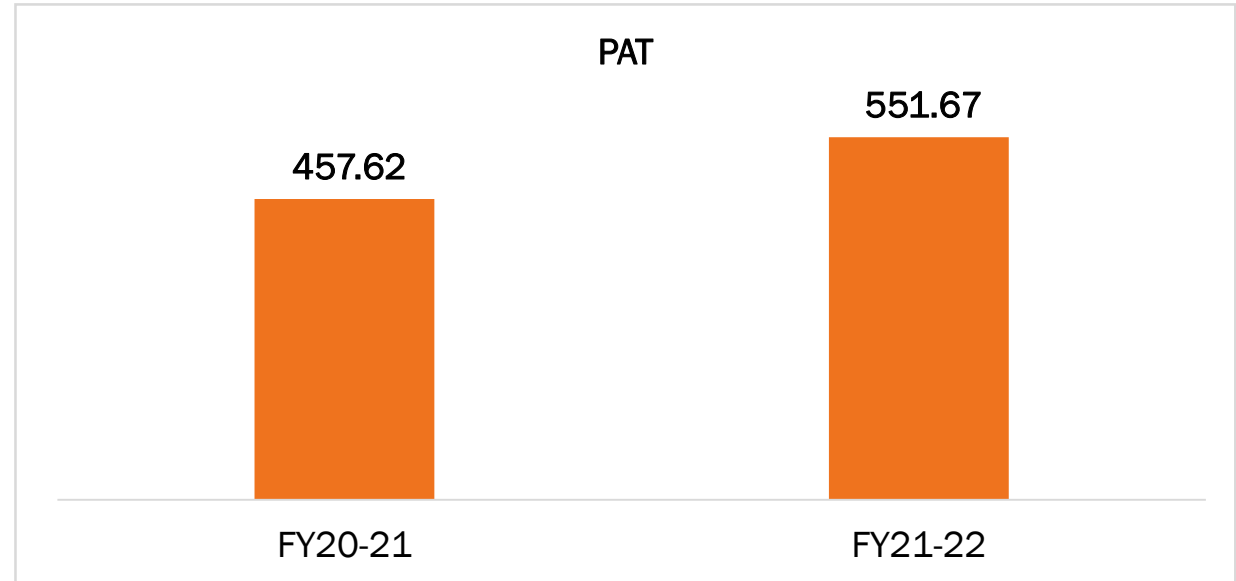
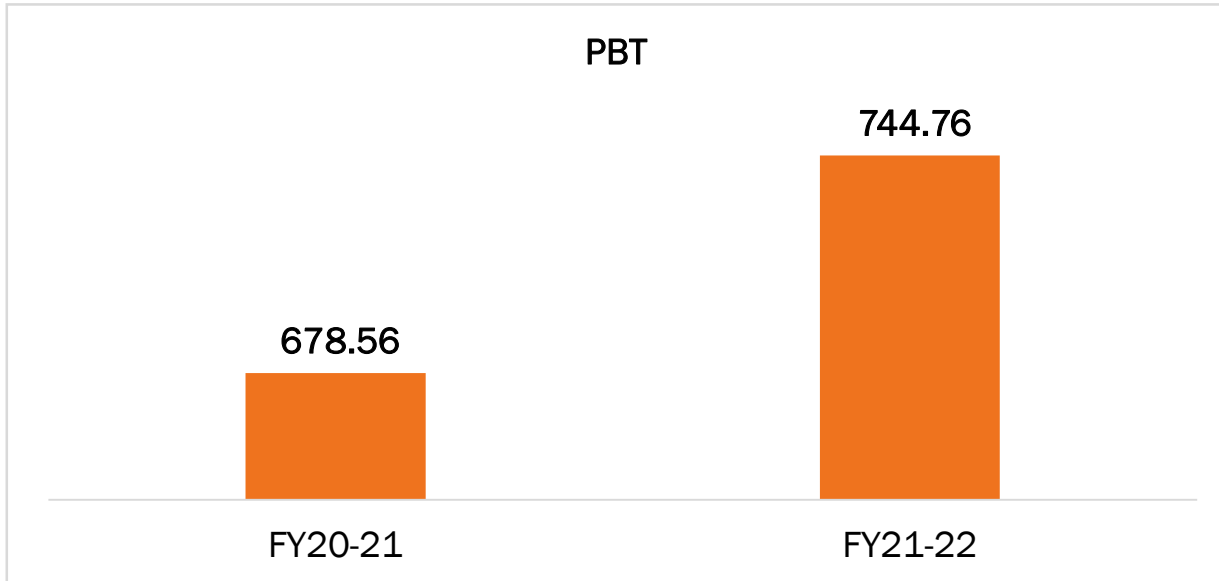
700+ Over 700 Industrial (Retail) Customers



Financial Overview

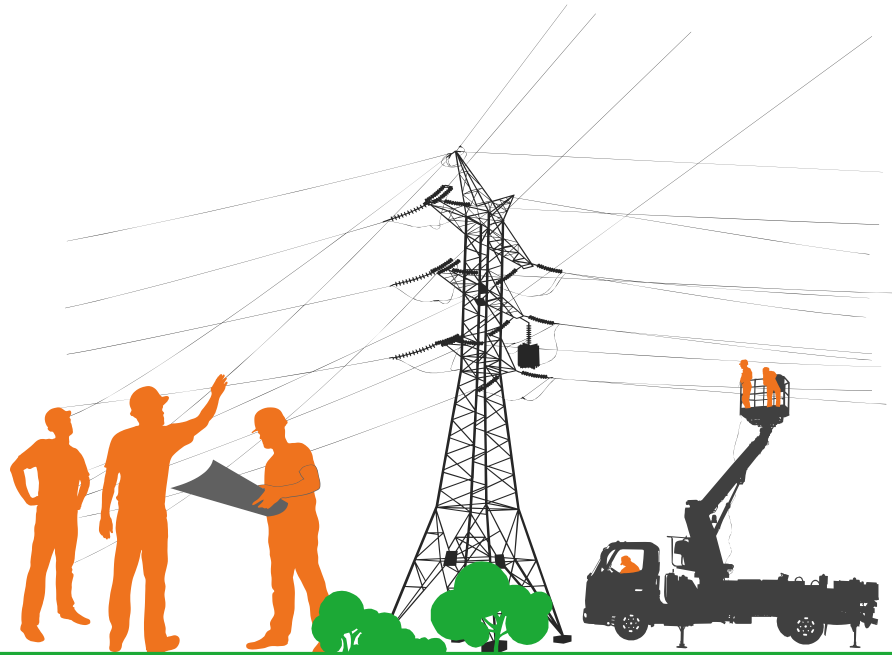


Amount in ₹ Crores

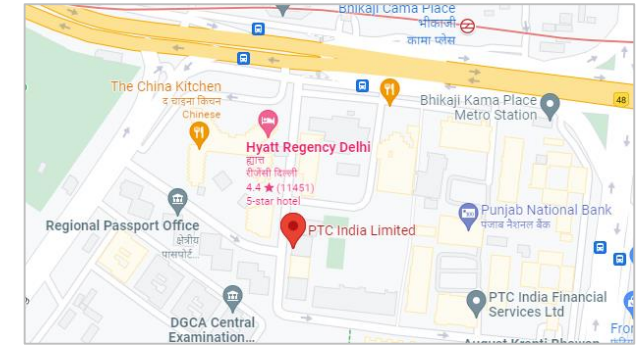


Consolidated

Particulars	Quarter Mar 2022	Quarter Mar 2021	Quarter Dec 2021	FY 2021-22	FY 2020-21	%
Revenue from operations						
Revenue from operations	2,825.39	3,627.40	3,242.37	16,279.25	17,796.09	-8.52%
Other operating revenue	276.09	289.18	81.21	577.14	549.41	5.05%
Total revenue from operation	3,101.48	3,916.58	3,323.58	16,856.39	18,345.50	-8.12%
Other Income	5.56	9.41	14.82	23.38	28.16	-16.97%
Total Income	3,107.04	3,925.99	3,338.40	16,879.77	18,373.66	-8.13%
Expenses						
Purchases	2,506.24	3,248.93	2,911.48	14,784.91	16,052.86	-7.90%
Impairment of financial instrument	48.92	106.91	83.42	167.86	231.84	-27.60%
Operating expenses	60.57	151.79	17.32	153.02	222.50	-31.23%
Employee benefit expenses	18.00	17.71	19.02	74.71	65.40	14.24%
Finance costs	181.86	215.30	180.34	751.47	918.98	-18.23%
Depreciation and amortization expenses	25.55	25.11	25.49	101.32	100.01	1.31%
Other expenses	49.43	26.81	16.74	101.02	82.78	22.03%
Total expenses	2,890.57	3,792.56	3,253.81	16,134.31	17,674.37	-8.71%
Profit before exceptional items and tax	216.47	133.43	84.59	745.46	699.29	6.60%
Exceptional items	-	(20.65)	-	-	(20.65)	-100.00%
Profit Before Share of Profit/(Loss) of Associates and Tax	216.47	112.78	84.59	745.46	678.64	9.85%
Share of Profit / (Loss) of Associates	(0.57)	0.11	(0.17)	(0.70)	(0.08)	775.00%
Profit Before Tax	215.90	112.89	84.42	744.76	678.56	9.76%
Tax expenses						
Current tax (including deferred tax)	58.79	63.12	21.51	193.09	220.94	-12.61%
Net Profit for the period	157.11	49.77	62.91	551.67	457.62	20.55%
Total other comprehensive income, net of tax	10.07	(5.48)	0.32	19.30	(5.85)	-429.91%
Total comprehensive income for the period	167.18	44.29	63.23	570.97	451.77	26.39%



Thank You



PTC India Limited

2nd Floor, NBCC Tower
15 Bhikaji Cama Place
New Delhi – 110066

Tel. No. – +91-11-41659500, 41595100, 46484200

Fax No. – 91-11-41659144,41659145



S-Ancial Technologies Pvt. Ltd

(Investor Relations)

215, Shivshakti Industrial Estate, J.R
Boricha Marg, Lower Parel (E)
Mumbai - 400011

Nihar Mehta

nihar@s-ancial.com

+91 9920252534